

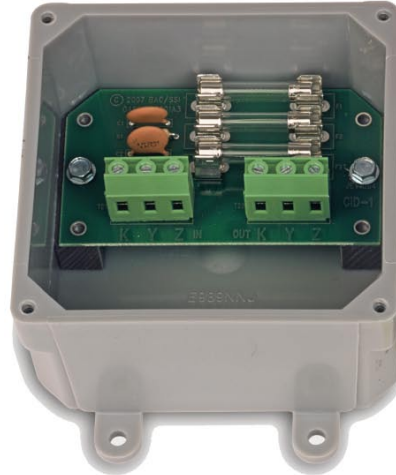


TERMINATION DEVICES

CID-1 CUSTOMER INTERFACE DEVICE

DESCRIPTION

The CID-1 Customer Interface Device is a low-cost, fused KYZ termination device which supplements the electric meter's KYZ pulse initiator. It provides two sets of K, Y, & Z connector terminals, one for connection to the meter's K, Y, and Z output terminals and the other for the utility customer's energy control system input terminals.



FUNCTIONAL SUMMARY

	IN	OUT
#	1	1
TYPE	2 or 3 Wire	2 or 3 Wire
FORM	A or C	A or C

The CID-1's mounting configurations incorporates four knockouts for 1/2" electrical conduit which can be used in a wide range of connection schemes to the electric meter's enclosure.

The CID-1's input and output circuit's terminal strips are "EURO" type. When the stripped wire has been correctly installed in the terminals "slot", no conductive parts are exposed on the surface of the terminal strip, thus allowing the user maximum protection from accidental electrical shock. Each lead of the CID-1 is individually fused. The K fuse and either the Y or the Z fuse are in series at all times providing a coordinated fusing scheme designed to prevent damage to the meter or the customer's energy control system. In addition, this fuse configuration provides the provision for master/slave fusing. A built-in "snubber" network is installed to suppress excessive transient voltages.

The CID-1 features a watertight Noryl enclosure and offers excellent electrical insulation. A beaded-gasket lid ensures that the circuit inside remains dry and clean.

CID-1



TERMINATION DEVICES

CID-1 CUSTOMER INTERFACE DEVICE

SPECIFICATIONS

ELECTRICAL

Input/Output Voltage:	300 VAC
Input/Output Resistance:	50 milliohms maximum
Insulation Resistance:	50 megohms typical

MECHANICAL

Mounting:	Any position
Size:	4.5" wide, 4.5" high, 2.25" deep
Weight:	~1 pound, depending on mounting configuration

TEMPERATURE

Temperature Range:	-38° C to +70° C, -36.4° F to +158° F
Humidity:	0 to 98% non-condensing

CID-1