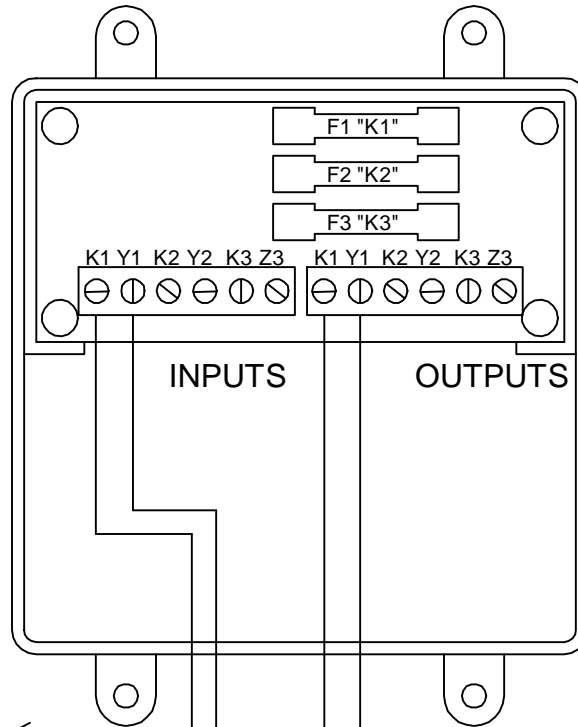


INSTRUCTION SHEET

CID-3 CUSTOMER INTERFACE DEVICE



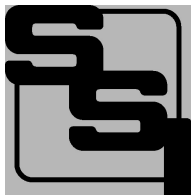
MOUNTING POSITION - The CID-3 can be mounted in any position.

POWER INPUT - No power supply is required. The CID-3 is a "pass-through" device and provides for convenient pulse output termination with fuses in series with each "K" terminal between the inputs and outputs. Pulses are supplied to the device by an external source, usually an electric meter.

METER CONNECTIONS - Three isolated channels are provided. The CID-3's "K1" and "Y1" input terminals should be connected to the "K" and "Y" terminals of the meter's first pulse output channel. Connect the CID-3's second and third K&Y input terminals to different pulse outputs on the meter (or to different meters' KY outputs).

FUSES - The fuses are type 3AG and may be up to 2 Amps in size. Three 1/2 Amp fuses are supplied standard with the unit.

OUTPUTS - The outputs are configured as a 2-wire output (Form A). Transient suppression is provided internally by a RC "snubber" network. While the snubber network may help limit transients on the contacts of the meter's KY or KZ output, it is not intended to provide isolation between the meter and customer's equipment such as that provided by an isolation relay.

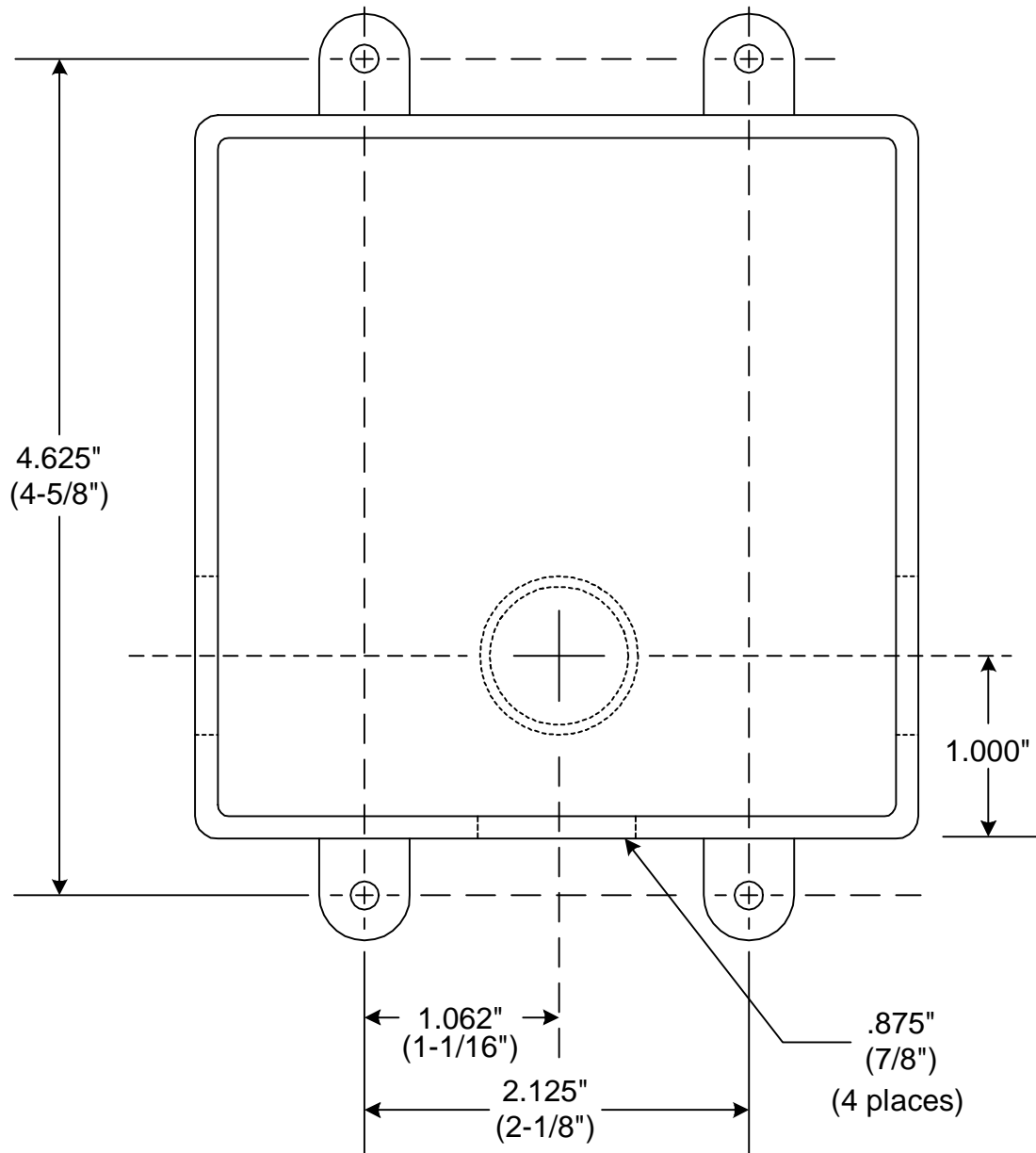


SOLID STATE INSTRUMENTS

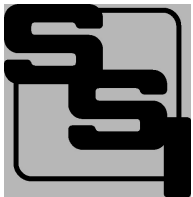
a division of Brayden Automation Corp.
6230 Aviation Circle, Loveland, Colorado 80538
Phone: (970)461-9600 Fax: (970)461-9605
E-mail: support@solidstateinstruments.com

MECHANICAL DETAILS

CID-1/CID-2/CID-3



Enclosure has four knockouts for 1/2" conduit connections.



SOLID STATE INSTRUMENTS

a division of Brayden Automation Corp.
6230 Aviation Circle, Loveland, Colorado 80538
Phone: (970)461-9600 Fax: (970)461-9605
E-mail: support@solidstateinstruments.com